



ATSimulations Colomban MC-15 "Cri-Cri"

User manual

Index

Introduction.....	3
Software license and copyrights.....	4
System requirements.....	5
Product features.....	5
FSX and P3D settings.....	6
Aircraft history.....	7
Specifications.....	9
Panel and controls.....	10
Credits and contacts.....	11

Introduction

Colomban Cri-Cri is the smallest twin engine aircraft. It's strange that we didn't have good model of for Flight Simulator platforms. Until now! Glad to present you high quality product done with all modern modeling rules of add-ons development. Amazing textures resolution, bumps, reflections and specular maps. Detailed hi-poly exterior and virtual cockpit. Gauges done with 3d parts and smoothly animated. Realistic pilot's movements. And so on!

During the development I was really surprised how cool this plane is. In spite of its funny look, this is serious machine. Totally aluminum, rare airfoil, falling ailerons, self rotating stabilizer. If you want to build it, it will not be easy to find materials (special metal, special foam etc.) besides you'll need a lot of special tools. Aircraft have outstanding flying characteristics for it's size.

I'm sure you'll spend time having fun with Cri-Cri in your favorite simulator whatever it is FSX or P3D now but I have plans to convert model into X-Plane and Outerra.

I'm open for any partnership and feedback with this project or any other in future. Contacts could be found at the end of this manual.

Have fun with ATSimulations Colomban Cri-Cri !

Andrey Tsvirenko © ATSimulations

September 2017

Software license and copyrights

IMPORTANT-READ CAREFULLY: This End-User License Agreement ("EULA") is a legal agreement between you the End-User (either an individual or a single legal entity) and ATSimulations manufacturer ("ATSimulations") for the use of the SOFTWARE referred to below. Please read the terms carefully before installing, copying and using the product.

Installing, copying or using the product indicates your tacit acceptance of these terms. This EULA is valid and grants the end-user rights ONLY if the SOFTWARE is genuine and a genuine license for the SOFTWARE is included.

The following agreement is made between you (the user) and the ATSimulations concerning THE SOFTWARE product "Colomban Cri-Cri", add-on software for the Microsoft Flight Simulator X and Lockheed Martin Prepar3D. This software is furnished "as is" and comes with a guarantee of efficiency if all the «System Requirements» are fulfilled. In case of lacking of any system components, malfunctions or drawbacks can appear in the utilization of Colomban Cri-Cri software, which is not the responsibility of the ATSimulations. You use the Software at your own risk, the authors are not responsible for any loss or distortion of data, nor for any profit lost during the process of use or incorrect use of this software.

The Software is the property of the ATSimulations. Accepting this license agreement grants the user limited rights for the use of it. The Colomban Cri-Cri software is protected by copyright laws and international treaty provisions and remains the property of ATSimulations even after acceptance of this license agreement.

Under the license agreement ATSimulations agrees to offer end-user rights of the Colomban Cri-Cri software to everybody who:

- agrees AND complies with the conditions of this license agreement;
- has paid the amount stated for this product.

The given license agreement gives you the right to install and use only one copy of the Colomban Cri-Cri software on a single computer. With the exception of repaints, you are not entitled to:

- make any changes in the Colomban Cri-Cri software;
- annex the Colomban Cri-Cri software to any other software product;
- copy, distribute, resell, sublicense or rent Colomban Cri-Cri software, in its entirety, or in part without the express written permission of ATSimulations.

System requirements

- ✓ Windows XP SP3/Vista/7
- ✓ FSX SP2 / Acceleration pack or FSX SE or P3D v3 (v4)
- ✓ 4096 MB Ram
- ✓ Processor: 3 GHz
- ✓ Available hard drive space: 1.5 GB (for one platform)
- ✓ Video card: DirectX 10 compatible

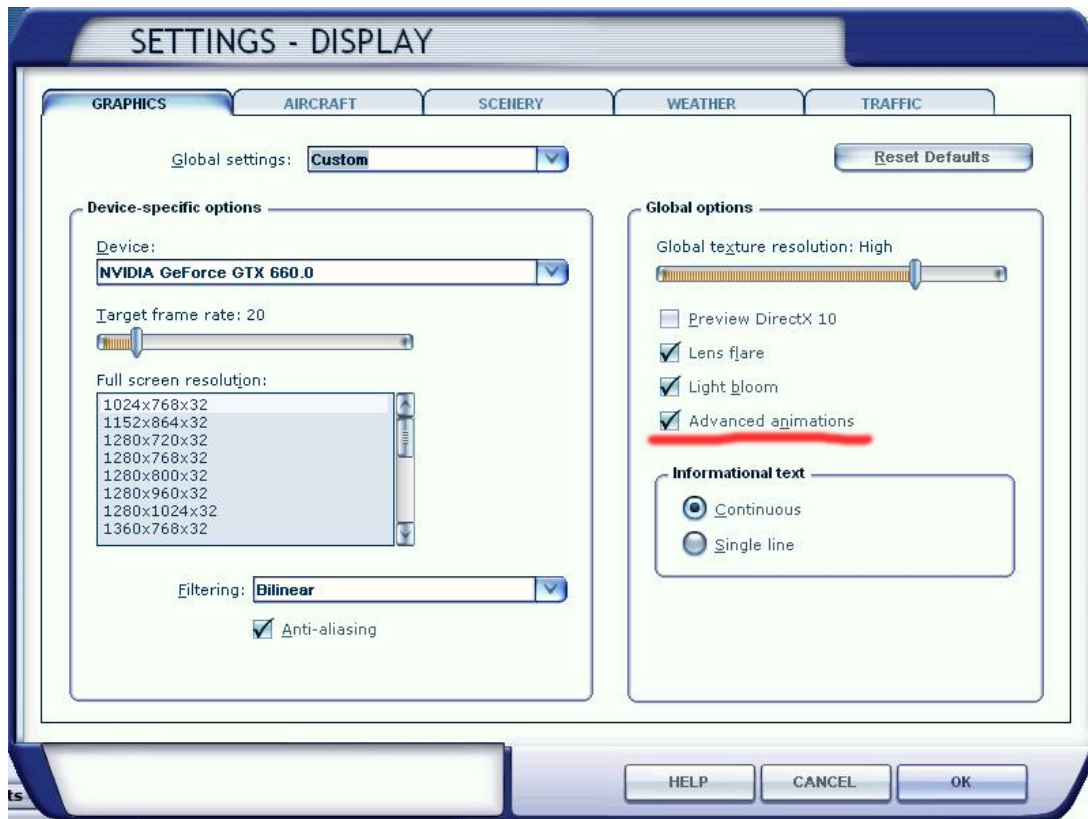
- ✓ Accurate exterior and virtual cockpit 3d models done in 3dsmax
- ✓ Ultra high resolution textures. Three 4096x4096p exterior diffuse maps
- ✓ Specular, reflections and bump maps

Product features

- ✓ Layered paint kit textures
- ✓ Ultra smooth gauges developed in 3d
- ✓ Shadows from needles, dynamic reflections on gauges glass
- ✓ FPS friendly
- ✓ Unique sound of two stroke JPX PUL 212 engines

FSX and P3D settings

Please set checkbox "advanced animation" on. Pilot and gear animation will not work correctly without it. P3D use it by default.



Aircraft history



The whole story of Cri-Cri airplane, the world's smallest twin-engined aircraft, begun in 1971, when CriCri's aircraft designer Michel Colombar set his goal to build a very small and economical plane powered by two little engines, that would be capable of flying even some aerobatics. They say, that he also wanted not to exceed his budget over 1000 USD including two engines, which was quite hard to believe even in early 70s. Constructional time took around 1500 working hours, spread to couple of years. The plane became reality in 1973 and was given a name after Michel Comomban's daughter, who was also often called 'Cri-Cri'.

Cri-Cri's maiden flight was performed by test pilot Robert Buisson. It took place at 'Guyancourt Airport' on 19th July 1973, just stone's throw from Paris. After some pre-flight landing gear tests, Michel with Robert decided to change CriCri's current two-wheeled gear to more safe three-wheeled gear. Later on, everything was prepared for take-off. Robert gave it some gas and the aircraft smoothly accelerated to 100 km/hour just within eight seconds and took wing above runway...

ATSimulations MC-15 "Cri-Cri"

Nowadays it's been more than forty years, since Cri-Cri had it's first flight, but CriCri's legend is still living, and I think, it will be living for many future years, because construction of this plane is extremely dateless.

On whole world is now registered more than one hundred-fifty Cri-Cries in many construction versions, with different engines, etc. Majority of them flies in their native country (France). It's over 110 planes, the second country is the USA with over twenty registered planes. The United Kingdom, Germany and Canada is following.

Unfortunately, there is no sign about this gorgeous ultralight homebuilt plane in the middle or Eastern Europe, so probably everyone who built it would become the very first owner in this part of the world, where I came from.

Many people are in love to this plane mainly because of its fantastic combination of 'ultralight plane' dimensions and high performances.

© <http://flight.cz/cricri/english/>



Specifications

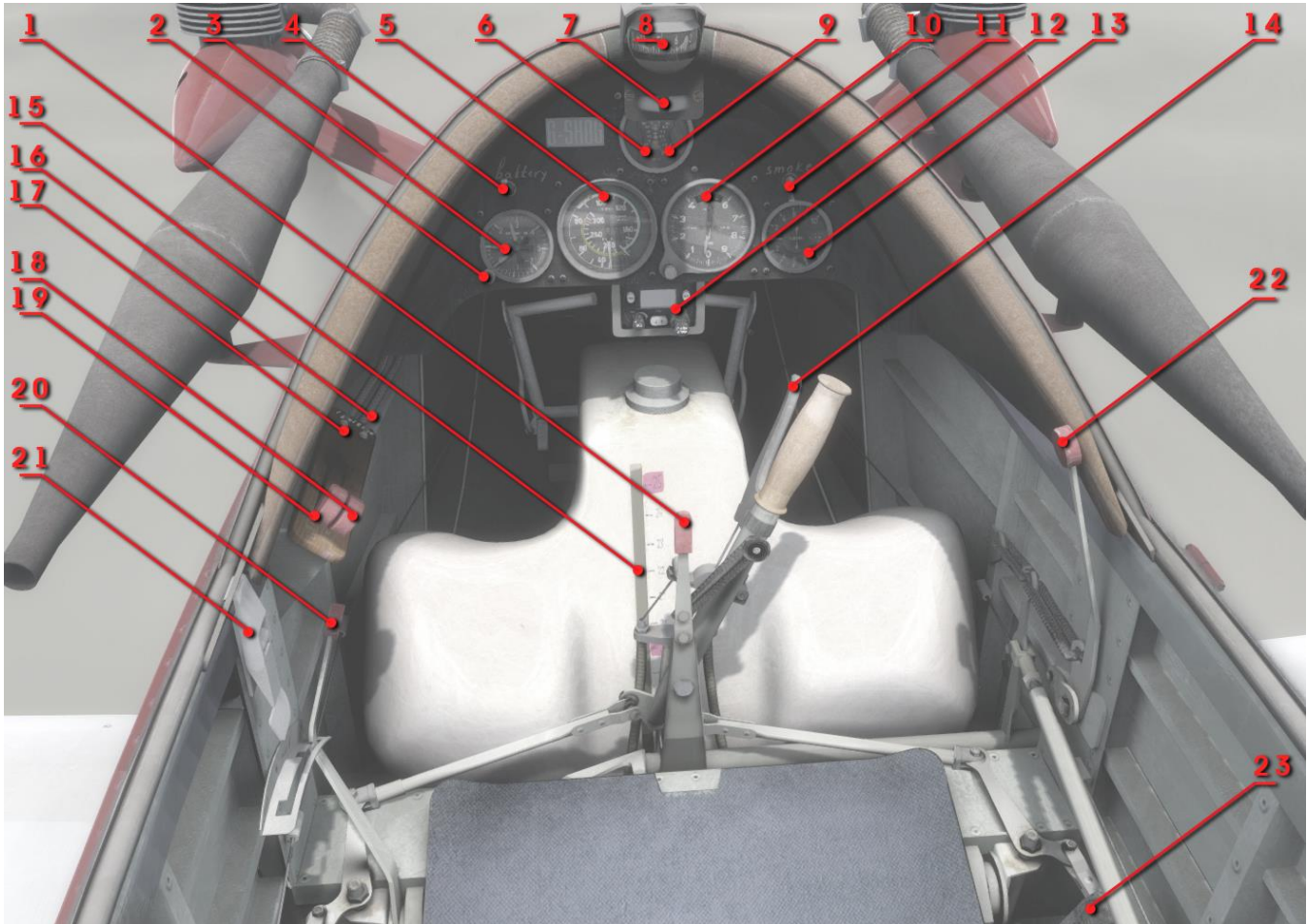
General characteristics

Length:	3.9 m (12 ft 10 in)
Wingspan:	4.9 m (16 ft 1 in)
Wing area:	3.1 m ² (33 sq ft)
Airfoil:	Wortmann 21.7
Empty weight:	78 kg (172 lb)
Max takeoff weight:	170 kg (375 lb)
Powerplant:	2 × JPX PUL 212 single-cylinder 11 kW (15 hp) each
Propellers:	2-bladed

Performance

Maximum speed:	220 km/h (137 mph; 119 kn)
Cruise speed:	185 km/h; 115 mph (100 kn)
Range:	463 km; 288 mi (250 nmi)
Service ceiling:	3,700 m (12,100 ft)
Rate of climb:	6.6 m/s (1,300 ft/min)
Wing loading:	55 kg/m ² (11 lb/sq ft)

Panel and Controls



- | | |
|-----------------------------------|--|
| 1. Aileron trim | 13. Vertical speed indicator |
| 2. Gmeter knob | 14. Brakes lever |
| 3. Gmeter | 15. Fuel indicator |
| 4. Battery tumbler | 16. Right engine ignition tumbler |
| 5. Airspeed indicator | 17. Left engine ignition tumbler |
| 6. Left engine RPM | 18. Right engine throttle lever |
| 7. Turn and slip indicator | 19. Left engine throttle lever |
| 8. Compass | 20. Flaps lever |
| 9. Right engine RPM | 21. Cockpit door lock |
| 10. Altitude indicator | 22. Elevator trim lever |
| 11. Smoke tumbler | 23. Map |
| 12. TY91 Radio | |

Contacts

With any questions or offers about this or future projects please contact: atsimulations@gmail.com

Like, follow, share my FB page: <https://www.facebook.com/ATSimulations/>